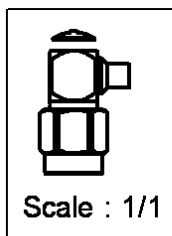
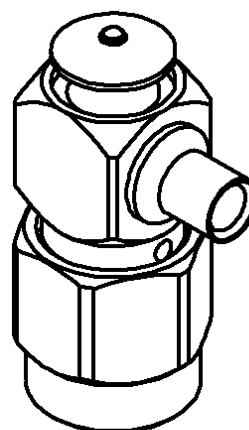
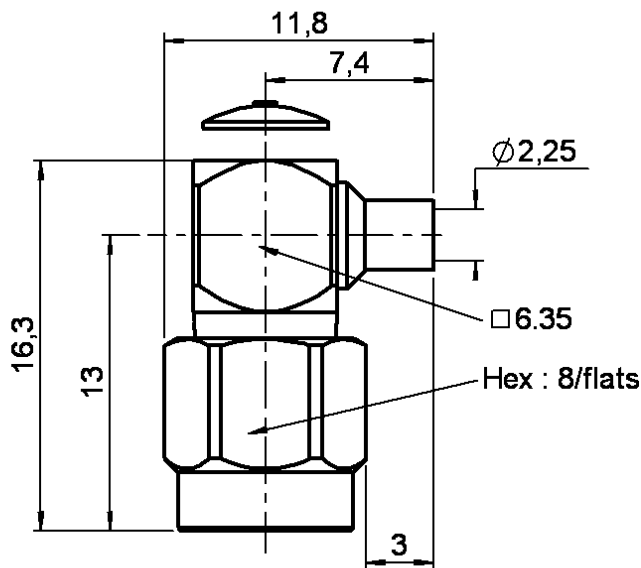


RIGHT ANGLE PLUG SOLDER TYPE

R125.153.009

CABLE .085

Series : SMA



All dimensions are in mm.

COMPONENTS	MATERIALS	PLATING
BODY	BERYLLIUM COPPER	GOLD 1.3 OVER COPPER 0.2 µm
CENTRE CONTACT	BRASS	GOLD 2.54 OVER COPPER 2.54 µm
OUTER CONTACT	-	- µm
INSULATOR	PTFE	
GASKET	SILICONE RUBBER	
OTHERS PARTS	BERYLLIUM COPPER	GOLD 1.3 OVER COPPER 0.2 µm
-	-	-
-	-	-



Edition : 9840 D

Design changes may be in order to improve the product.

RIGHT ANGLE PLUG SOLDER TYPE

R125.153.009

CABLE .085

Series : SMA

ELECTRICAL CHARACTERISTICS

Impedance **50** Ω
 Frequency **0-12.4** GHz
 VSWR **1.07 + 0.010** x F(GHz) Maxi
 Insertion loss **0.05** √F(GHz) dB
 RF leakage - (**90** - F(GHz)) dB mini
 Operating temperature **-65/+105** °C
 Voltage rating **335** Veff Maxi
 Dielectric withstanding **750** Veff mini
 Insulation resistance **5000** MΩ mini

SPECIFICATION

Stripping	a	b	c	d	e	f
mm	3.17	0.00	0.00	0.00	0.00	0.00

Assembly instruction : **Solder 02**

Recommended cables
 RG 405
 KS 1

Cable retention
 - pull off **130** N mini
 - torque **NA** N.cm

MECHANICAL CHARACTERISTICS

Centre contact retention
 Axial force – Mating end **27** N mini
 Axial force – Opposite end **27** N mini
 Torque **2.8** N.cm mini

Recommended torque
 Mating **100** N.cm
 Panel nut **NA** N.cm
 Clamp nut **NA** N.cm
 A/F clamp nut **0.000** mm

Mating life **500** Cycles mini
 Weight **0.000** g

TOOLING

Part Number	Description	Hexagon
.	.	.
R282.051.000	STRIPPING TOOL	
R282.744.200	SOLDERING POSITIONER FOR RIGHT ANGLE SMA	
R282.740.000	SOLDERING MOUNTING	

OTHERS CHARACTERISTICS

-

ENVIRONMENTAL

Hermetic seal **NA** Atm.cm3/s
 Leakage – pressurised only **NA** Mpa



Edition : 9840 D

Design changes may be in order to improve the product.